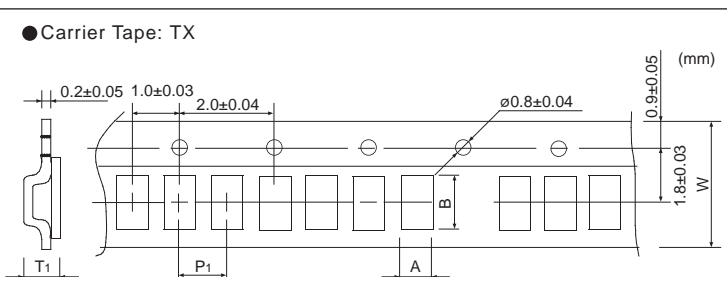
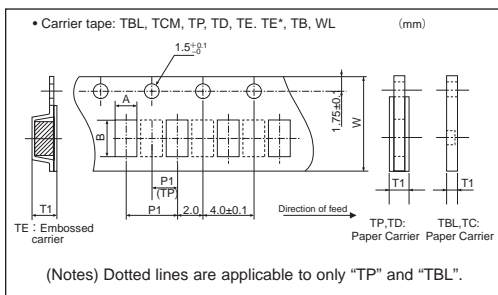


For Product Specific packaging, please refer to the individual product data sheets.

| Type   | Component Size (mm) |      |      | Carrier Tape | Quantity/ Reel (Pieces) | Weight (g) |              | Taping (mm) |           |           |           |          | Reel Size $\phi a$ (mm) |             |     |
|--|---------------------|------|------|--------------|-------------------------|------------|--------------|-------------|-----------|-----------|-----------|----------|-------------------------|-------------|-----|
|  | L                   | W    | T    |              |                         | Reel       | NET/ 1000pcs | A           | B         | W         | P1        | T1       |                         |             |     |
| RK73B<br>RK73H<br>RK73G<br>RK73Z<br>RS73<br>HSG73P<br>HV73<br>SG73<br>SG73P<br>SG73S<br>SR73<br>RF73 | 1F                  | 0.4  | 0.2  | 0.13         | TX                      | 40,000     | 114          | 0.04        | 0.25±0.04 | 0.45±0.04 | 4         | 1        | 0.40±0.1                | 180         |     |
|  |                     |      |      |              | TBL                     | 20,000     | 153          |             | 0.25±0.04 | 0.45±0.04 | 8         | 2        | 0.31±0.1                | 180         |     |
|  | 1H                  | 0.6  | 0.3  | 0.23         | TCM                     | 15,000     | 102          | 0.14        | 0.37±0.05 | 0.67±0.05 | 8         | 2        | 0.42±0.1                | 180         |     |
|  |                     |      |      |              | TPL                     | 20,000     | 170          | 0.68        | 0.65±0.10 | 1.15±0.10 | 8         | 2        | 0.42±0.2/-0             | 180         |     |
|  | 1E                  | 1.0  | 0.5  | 0.35         | TP                      | 10,000     | 95           |             | 2.14      | 1.1±0.1   | 1.9±0.1   | 8        | 2                       | 0.6±0.2/-0  | 180 |
|  |                     |      |      |              | TP                      | 10,000     | 116          | 1.1±0.1     |           | 1.9±0.1   | 8         | 4        | 0.6±0.2/-0              | 180         |     |
|  | 1J                  | 1.6  | 0.8  | 0.45         | TD                      | 5,000      | 105          | 4.54        | 1.65±0.20 | 2.4±0.2   | 8         | 2        | 0.75±0.2/-0             | 180         |     |
|  |                     |      |      |              | TP                      | 10,000     | 148          |             | 1.65±0.20 | 2.4±0.2   | 8         | 4        | 0.75±0.2/-0             | 180         |     |
|  | 2A                  | 2.0  | 1.25 | 0.5          | TD                      | 5,000      | 125          | 9.14        | 1.65±0.20 | 2.4±0.2   | 8         | 4        | 0.75±0.2/-0             | 180         |     |
|  |                     |      |      |              | TE                      | 4,000      | 83           |             | 1.6±0.2   | 2.4±0.2   | 8         | 4        | 0.9±0.1                 | 180         |     |
|  | 2B                  | 3.2  | 1.6  | 0.6          | TD                      | 5,000      | 140          | 15.5        | 2±0.2     | 3.5±0.2   | 8         | 4        | 0.75±0.2/-0             | 180         |     |
|  |                     |      |      |              | TE                      | 4,000      | 88           |             | 1.9±0.2   | 3.5±0.2   | 8         | 4        | 1.0±0.15                | 180         |     |
|  | 2E                  | 3.2  | 2.6  | 0.6          | TD                      | 5,000      | 165          | 24.3        | 2.85±0.20 | 3.5±0.2   | 8         | 4        | 0.75±0.2/-0             | 180         |     |
|  |                     |      |      |              | TE                      | 4,000      | 111          |             | 2.85±0.20 | 3.5±0.2   | 8         | 4        | 1.0±0.15                | 180         |     |
| W2H, 2H  | 5.0                 | 2.5  | 0.6  | TE           | 4,000                   | 185        | 37.1         | 2.9±0.2     | 5.35±0.20 | 12        | 4         | 1.0±0.15 | 180                     |             |     |
| W3A2, W3A, 3A  | 6.3                 | 3.1  | 0.6  | TE           | 4,000                   | 244        | 37.1         | 3.44±0.20   | 6.65±0.20 | 12        | 4         | 1.0±0.15 | 180                     |             |     |
| RN73H<br>RN73R<br>LT73<br>LT73V  | 1E                  | 1.0  | 0.5  | 0.35         | TP                      | 10,000     | 95           | 0.68        | 0.65±0.10 | 1.15±0.10 | 8         | 2        | 0.42±0.2/-0             | 180         |     |
|  | 1J                  | 1.6  | 0.8  | 0.45         | TD                      | 5,000      | 105          | 2.14        | 1.1±0.1   | 1.9±0.1   | 8         | 4        | 0.6±0.2/-0              | 180         |     |
|  | 2A                  | 2.0  | 1.25 | 0.5          | TD                      | 5,000      | 125          | 4.54        | 1.65±0.20 | 2.4±0.2   | 8         | 4        | 0.75±0.2/-0             | 180         |     |
|  |                     |      |      |              | TE                      | 4,000      | 83           |             | 1.6±0.2   | 2.4±0.2   | 8         | 4        | 1.0±0.15                | 180         |     |
|  | 2B                  | 3.2  | 1.6  | 0.6          | TD                      | 5,000      | 140          | 9.14        | 2±0.2     | 3.5±0.2   | 8         | 4        | 0.75±0.2/-0             | 180         |     |
|  |                     |      |      |              | TE                      | 4,000      | 88           |             | 1.9±0.2   | 3.5±0.2   | 8         | 4        | 1.0±0.15                | 180         |     |
|  | 2E                  | 3.2  | 2.5  | 0.6          | TD                      | 5,000      | 165          | 14.5        | 2.85±0.20 | 3.5±0.2   | 8         | 4        | 0.75±0.2/-0             | 180         |     |
|  |                     |      |      |              | TE                      | 4,000      | 111          |             | 2.85±0.20 | 3.5±0.2   | 8         | 4        | 1.0±0.15                | 180         |     |
|  | UR73<br>UR73V       | D1E  | 1.0  | 0.5          | 0.4                     | TP         | 10,000       | 95          | 0.72      | 0.65±0.10 | 1.15±0.10 | 8        | 2                       | 0.5±0.2/-0  | 180 |
|  |                     | D1J  | 1.6  | 0.8          | 0.5                     | TD         | 5,000        | 105         | 2.84      | 1.1±0.1   | 1.9±0.1   | 8        | 4                       | 0.68±0.2/-0 | 180 |
| D2A  |                     | 2.0  | 1.25 | 0.55         | TD                      | 5,000      | 125          | 5.74        | 1.65±0.2  | 2.4±0.2   | 8         | 4        | 0.75±0.2/-0             | 180         |     |
|  |                     |      |      |              | TD                      | 5,000      | 5.60         |             |           |           |           |          |                         |             |     |
| H2B  |                     | 3.2  | 1.6  | 0.6          | TD                      | 5,000      | 140          | 10.09       | 2±0.2     | 3.5±0.2   | 8         | 4        | 0.75±0.2/-0             | 180         |     |
| D2B  |                     |      |      |              | 5,000                   | 11.1279    |              |             |           |           |           |          |                         |             |     |
| 2B   |                     | 5.0  | 2.5  | 0.65         | TD                      | 5,000      | 10.09        | 29.80       | 2.9±0.2   | 5.35±0.20 | 12        | 4        | 1.0±0.15                | 180         |     |
| D2H  |                     |      |      |              | 4,000                   |            |              |             |           |           |           |          |                         |             |     |
| D3A  | 6.3                 | 3.1  | 0.6  | TE           | 4,000                   | 244        | 47.69        | 3.44±0.20   | 6.65±0.20 | 12        | 4         | 1.0±0.15 | 180                     |             |     |
| WK73<br>WU73<br>WG73   | 1E                  | 0.5  | 1.0  | 0.35         | TP                      | 10,000     | 95           | 0.65        | 0.65±0.10 | 1.15±0.10 | 8         | 2        | 0.42±0.2/-0             | 180         |     |
|  | 1J                  | 0.8  | 1.6  | 0.45         | TD                      | 5,000      | 105          | 2.13        | 1.1±0.1   | 1.9±0.1   | 8         | 4        | 0.6±0.2/-0              | 180         |     |
|  | 2A                  | 1.25 | 2.0  | 0.55         | TD                      | 5,000      | 125          | 4.93        | 1.65±0.20 | 2.4±0.2   | 8         | 4        | 0.75±0.2/-0             | 180         |     |
|  | 2B                  | 1.6  | 3.2  | 0.6          | TD                      | 5,000      | 154          | 12          | 2.0±0.2   | 3.5±0.2   | 8         | 4        | 0.75±0.2/-0             | 180         |     |
|  | 2H                  | 2.5  | 5.0  | 0.6          | TE                      | 4,000      | 209          | 30.2        | 2.9±0.2   | 5.35±0.20 | 12        | 4        | 1.0±0.15                | 180         |     |
|  | 3A                  | 3.1  | 6.3  | 0.6          | TE                      | 4,000      | 278          | 45.6        | 3.44±0.20 | 6.65±0.20 | 12        | 4        | 1.0±0.15                | 180         |     |
| WN73H  | 1J                  | 0.8  | 1.6  | 0.35         | TD                      | 5,000      | 102          | 1.48        | 1.1±0.1   | 1.9±0.1   | 8         | 4        | 0.6±0.2/-0              | 180         |     |
|  | 2B                  | 1.6  | 3.1  | 0.45         | TD                      | 5,000      | 131          | 7.26        | 2±0.2     | 3.5±0.2   | 8         | 4        | 0.75±0.2/-0             | 180         |     |
| SLR  | 1                   | 6.3  | 3.1  | 1.9          | TE                      | 4,000      | 150          | 90          | 3.6±0.1   | 6.8±0.1   | 12        | 8        | 2.35±0.1                | 180         |     |
|  |                     |      |      |              | TED                     | 2,000      | 370          |             |           |           |           |          |                         | 255         |     |
| MWS  | 5                   | 16.9 | 8.6  | 4.8          | TEG                     | 1,500      | 1,950        | 1,000       | 8.90±0.10 | 17.3±0.10 | 24        | 12       | 5.1±0.10                | 380         |     |
| PS   | L (0.2m $\Omega$ )  | 6.3  | 3.15 | 1.40         | TEB                     | 5,000      | 1,450        | 181         | 3.45±0.1  | 6.60±0.1  | 12        | 8        | 1.6±0.1                 | 330         |     |
|  | L (0.3m $\Omega$ )  | 6.3  | 3.15 | 1.32         | TEB                     | 5,000      | 1,350        | 161         | 3.45±0.1  | 6.60±0.1  | 12        | 8        | 1.6±0.1                 | 330         |     |
|  | L (0.5m $\Omega$ )  | 6.3  | 3.15 | 1.12         | TEB                     | 5,000      | 1,180        | 128         | 3.45±0.1  | 6.60±0.1  | 12        | 8        | 1.6±0.1                 | 330         |     |
|  | F (0.5m $\Omega$ )  | 3.0  | 3.8  | 1.8          | TEB                     | 3,000      | 650          | 70          | 3.25±0.1  | 4.25±0.1  | 12        | 8        | 2.2±0.1                 | 330         |     |
|  | F (1m $\Omega$ )    | 3.0  | 3.8  | 1.8          | TEB                     | 3,000      | 580          | 45          | 3.25±0.1  | 4.25±0.1  | 12        | 8        | 2.2±0.1                 | 330         |     |
| TLR  | 2A                  | 2.0  | 1.25 | 0.25         | TD                      | 5,000      | 95           | 5           | 1.65±0.1  | 2.4±0.1   | 8         | 4        | 0.42±0.2/-0             | 178         |     |
|  | 2BN, 2B, 2BW, 2BP   | 3.2  | 1.6  | 0.6          | TD                      | 5,000      | 180          | 13          | 2.0±0.10  | 3.5±0.10  | 8         | 4        | 0.75±0.05               | 180         |     |
|  | 2H, 2HW             | 5.0  | 2.5  | 0.6          | TE                      | 4,000      | 283          | 48.7        | 2.9±0.10  | 5.35±0.10 | 12        | 4        | 0.77±0.1                | 180         |     |
|  | 3AW, 3AP, 3APS      | 6.4  | 3.2  | 0.6          | TE                      | 2,000      | 313          | 100         | 3.55±0.10 | 6.75±0.10 | 12        | 8        | 1.0±0.1                 | 180         |     |

RK73 series fit for  $\phi 255$  and  $\phi 330$  reels, and RN73 series for  $\phi 255$  reel. For further details, please refer to individual specification sheets.

### Packaging specifications



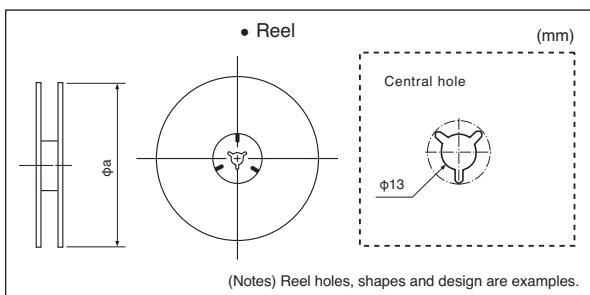
Specifications given herein may be changed at any time without prior notice. Please confirm technical specifications before you order and/or use.

For Product Specific packaging, please refer to the individual product data sheets.

| Type          | Component Size (mm) |          |          | Carrier Tape | Quantity/ Reel (Pieces) | Weight (g)  |              | Taping (mm) |                |               |          |          | Reel Size $\phi a$ (mm) |         |
|---------------|---------------------|----------|----------|--------------|-------------------------|-------------|--------------|-------------|----------------|---------------|----------|----------|-------------------------|---------|
|               | L                   | W        | T        |              |                         | Reel        | NET/ 1000pcs | A           | B              | W             | P1       | T1       |                         |         |
| TLRZ          | 1E                  | 1.0      | 0.5      | 0.4          | TB                      | 10,000      | 99           | 1.1a        | 0.65±0.1       | 1.15±0.1      | 8        | 2        | 0.6±0.03                | 180     |
|               | 1J                  | 1.6      | 0.8      | 0.5          | TD                      | 5,000       | 120          | 5           | 1.10±0.1       | 1.90±0.1      | 8        | 4        | 0.6±0.05                | 180     |
|               | 2A                  | 2.0      | 1.25     | 0.5          | TD                      | 5,000       | 145          | 9           | 1.65±0.2       | 2.4±0.1       | 8        | 4        | 0.75±0.05               | 180     |
|               | 2B                  | 3.2      | 1.6      | 0.5          | TD                      | 5,000       | 192          | 15.3        | 2.0±0.10       | 3.5±0.10      | 8        | 4        | 0.75±0.05               | 180     |
| TLRH          | 2A                  | 2.0      | 1.25     | 0.25         | TD                      | 5,000       | 95           | 4           | 1.65±0.1       | 2.4±0.1       | 8        | 4        | 0.42±0.2/-0             | 178     |
|               | 3AW, 3AP            | 6.3      | 3.2      | 0.5          | TE                      | 2,000       | 200          | 52          | 3.55±0.20      | 6.75±0.20     | 12       | 8        | 1.0±0.1                 | 178     |
| SL            | 07, W07             | 5.0      | 2.5      | 1.7          | TE                      | 2,000       | 170          | 45          | 3.1±0.1        | 5.5±0.1       | 12       | 4        | 2.25±0.10               | 180     |
|               | 1, W1               | 6.3      | 3.1      | 1.9          | TE                      | 1,000       | 150          | 90          | 3.6±0.1        | 6.8±0.1       | 12       | 8        | 2.35±0.10               | 180     |
|               | 2                   | 11.5     | 7.0      | 2.5          | TED                     | 1,000       | 710          | 476         | 7.7±0.1        | 12.2±0.10     | 24       | 12       | 3.1±0.1                 | 255     |
| SLN           | 2, 3                | 11.5     | 7.0      | 2.4          | TED                     | 1,000       | 734          | 500         | 7.7±0.1        | 12.2±0.10     | 24       | 12       | 3.1±0.1                 | 255     |
|               | 5                   | 11.5     | 7.0      | 2.5          | TED                     | 1,000       | 834          | 600         | 7.7±0.1        | 12.2±0.10     | 24       | 12       | 3.1±0.1                 | 255     |
| TSL           | 1                   | 6.3      | 3.1      | 1.0          | TE                      | 3,000       | 200          | 41          | 3.4±0.1        | 6.6±0.1       | 12       | 4        | 1.3±0.1                 | 180     |
| CSR           | 1                   | 10.8     | 6.2      | 2.1          | TE                      | 1,000       | 620          | 320         | 6.7±0.1        | 11.1±0.10     | 24       | 12       | 2.60±0.10               | 255     |
|               | 2                   | 12.8     | 8.2      | 3.1          | TE                      | 1,000       | 900          | 690         | 9±0.1          | 13±0.10       | 24       | 12       | 4.35±0.10               | 330     |
| LP73          | 1J                  | 1.6      | 0.8      | 0.5          | TE                      | 5,000       | 73           | 1.91        | 1.1±0.1        | 1.9±0.1       | 8        | 4        | 0.6±0.1                 | 180     |
|               | 2A                  | 2.0      | 1.25     | 0.5          | TE                      | 5,000       | 80           | 4.09        | 1.6±0.1        | 2.4±0.1       | 8        | 4        | 0.85±0.2/-0             | 180     |
|               | 2B                  | 3.2      | 1.6      | 0.5          | TE                      | 5,000       | 95           | 7.61        | 2.0±0.1        | 3.6±0.1       | 8        | 4        | 0.85±0.2/-0             | 180     |
| SDT73H        | 2B                  | 3.2      | 1.6      | 0.5          | TEK/TE                  | 1,000/5,000 | 38/74        | 9.0         | 2.0±0.1        | 3.6±0.1       | 8        | 4        | 0.85±0.2/-0             | 180     |
| SDT73S        |                     |          |          |              |                         |             |              |             |                |               |          |          |                         |         |
| SDT73V        |                     |          |          |              |                         |             |              |             |                |               |          |          |                         |         |
| RD41 RN41, CC | 2ES, 12M            | 3.5      | 1.4      | —            | TE                      | 3,000       | 106          | 20          | 1.7±0.1        | 3.7±0.1       | 8        | 4        | 2.0 max.                | 178     |
|               | 2E, 25, 3AS         | 5.9      | 2.2      | —            | TE                      | 1,500       | 180          | 75          | 2.4±0.1        | 6.2±0.1       | 12       | 4        | 2.9 max.                | 178     |
| RCU           |                     | 1.6      | 0.8      | 1.15         | TE/TED                  | 2,000/5,000 | 53/112       | 6.4         | 1.05±0.15      | 1.85±0.15     | 8        | 4        | 1.25±0.1                | 178/260 |
| RCT           |                     | 2.0      | 1.25     | 1.45         | TE/TED                  | 2,000/5,000 | 70/153       | 13.9        | 1.65±0.1/-0.2  | 2.45±0.15     | 8        | 4        | 1.70±0.1                | 178/260 |
| RCS           |                     | 3.2      | 1.6      | 1.25         | TE/TED                  | 2,000/5,000 | 81/179       | 21.5        | 2.0±0.2        | 3.6±0.2       | 8        | 4        | 1.45±0.15               | 178/260 |
| RCW           |                     | 3.2      | 1.6      | 2.0          | TE                      | 2,000       | 96           | 26.8        | 1.95±0.1/-0.05 | 3.4±0.1/-0.05 | 8        | 4        | 2.2±0.1                 | 178     |
| CNN           | 2A2                 | 2.54     | 2.0      | 0.5          | TE                      | 4,000       | 100          | 9.7         | 2.4±0.2        | 2.9±0.2       | 8        | 4        | 1±0.15                  | 180     |
| KPC           | Q16                 | 4.9      | 5.99     | 1.6          | TE                      | 2,500       | 580          | 76          | 6.5±0.1        | 5.3±0.1       | 12       | 8        | 2.1±0.1                 | 330     |
|               | Q20                 | 8.66     | 5.99     | 1.6          | TE                      | 2,500       | 735          | 125         | 6.5±0.1        | 9.0±0.1       | 16       | 8        | 2.1±0.1                 | 330     |
|               | Q24                 | 8.66     | 5.99     | 1.6          | TE                      | 2,500       | 740          | 129         | 6.5±0.1        | 9.0±0.1       | 16       | 8        | 2.1±0.1                 | 330     |
|               | N08                 | 4.83     | 5.99     | 1.6          | TE                      | 2,500       | 575          | 73          | 6.5±0.1        | 5.3±0.1       | 12       | 8        | 2.1±0.1                 | 330     |
|               | N14                 | 8.66     | 5.99     | 1.6          | TE                      | 2,500       | 790          | 150         | 6.5±0.1        | 9.0±0.1       | 16       | 8        | 2.1±0.1                 | 330     |
|               | N16                 | 9.91     | 5.99     | 1.6          | TE                      | 2,500       | 800          | 153         | 6.5±0.1        | 10.3±0.1      | 16       | 8        | 2.1±0.1                 | 330     |
| HVDP08        | S03                 | 2.92     | 2.30     | 0.95         | TE                      | 3,000       | 110          | 9           | 3.15±0.1       | 2.77±0.1      | 8        | 4        | 1.22±0.1                | 180     |
| NV73 NV73DL   | 1J                  | 1.6      | 0.8      | 0.8          | TE                      | 2,500       | 58           | 7           | 1.2±0.1        | 1.9±0.1       | 8        | 4        | 1.75 max.               | 178     |
|               | 2A                  | 2.0      | 1.25     | 1.3 max.     | TE                      | 2,500       | 81           | 16          | 1.6±0.1        | 2.4±0.1       | 8        | 4        | 1.75 max.               | 178     |
|               | 2B                  | 3.2      | 1.6      | 1.65 max.    | TE                      | 2,500       | 114          | 32          | 2.0±0.1        | 3.6±0.1       | 8        | 4        | 1.75 max.               | 178     |
| NV73S         | 2E                  | 3.2      | 2.5      | 1.3          | TE                      | 2,000       | 155          | 60          | 2.85±0.1       | 3.50±0.1      | 8        | 4        | 1.55 max.               | 178     |
|               | 2J                  | 4.5      | 3.2      | 1.3          | TE                      | 1,000       | 182          | 105         | 3.60±0.1       | 4.90±0.1      | 12       | 8        | 2.05 max.               | 180     |
|               | 2L                  | 5.7      | 4.7      | 1.3          | TE                      | 1,000       | 277          | 199         | 5.40±0.1       | 6.00±0.1      | 12       | 8        | 2.60 max.               | 180     |
|               | 2L H                | 5.7      | 4.7      | 2.5          | TE                      | 1,000       | 416          | 340         | 5.40±0.1       | 6.00±0.1      | 12       | 8        | 2.60 max.               | 180     |
| TF            | 10B                 | 1.0      | 0.5      | 0.45         | TB                      | 10,000      | 95           | 0.68        | 0.65±0.05      | 1.15±0.05     | 8        | 2        | 0.6±0.04                | 180     |
|               | 16S, 16A, 16V       | 1.6      | 0.8      | 0.4          | TD                      | 5,000       | 105          | 2.15        | 1.1±0.1        | 1.9±0.1       | 8        | 4        | 0.6±0.2/-0              | 180     |
| CCF           | 1N, 1F              | 6.0      | 2.5      | 2.5          | TE                      | 1,000       | 210          | 140         | 2.7±0.2        | 6.4±0.2       | 12       | 4        | 2.9±0.2                 | 180     |
| CZB CZP       | 1J                  | 1.6±0.15 | 0.8±0.15 | 0.8±0.15     | TD                      | —           | —            | —           | —              | 1.8±0.1       | 8.1±0.1  | 4.0±0.1  | 1.1±0.1                 | 178     |
|               | 2A                  | 2.0±0.2  | 1.25±0.2 | 0.9±0.2      | TD                      | —           | —            | —           | —              | 2.4±0.1       | 8.1±0.1  | 4.0±0.1  | 1.2±0.1                 | 178     |
|               | 2B                  | 3.2±0.2  | 1.6±0.2  | 0.51±0.25    | TE                      | —           | —            | —           | —              | 3.5±0.1       | 8.1±0.1  | 4.0±0.1  | 1.8±0.1                 | 178     |
| MHL           | 1E                  | 1.0±0.1  | 0.5±0.1  | 0.5±0.1      | TP                      | —           | —            | —           | —              | 1.17±0.1      | 8.0±0.22 | 2.0±0.23 | 0.63±0.1                | 178     |
|               | 1J                  | 1.6±0.15 | 0.8±0.15 | 0.8±0.15     | TD                      | —           | —            | —           | —              | 1.85±0.1      | 8.0±0.1  | 4.0±0.1  | 1.1±0.1                 | 178     |

\* CZB2A: <2200Ω=TD:4,000; 2200Ω=TD: 2,000 pcs/reel

### Packaging specifications



Specifications given herein may be changed at any time without prior notice. Please confirm technical specifications before you order and/or use.

3/28/25