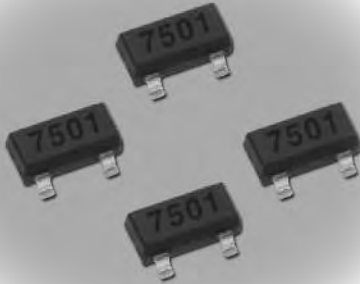


features

- Expanded flexibility of component layout
- Relative precision of pair resistors are guaranteed
- Relative resistance tolerance 0.05% ~
- TCR tracking $5 \times 10^{-6} \text{K}^{-1}$



ordering information

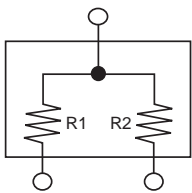
RTY	S03	T	TE	7516
Circuit Code	Package Symbol	Termination Material	Packaging	Custom Code
RTY: SOT-23 Resistor network	Package type symbol + number of pins	T: Sn (L: Sn/Pb)	TE: 7" embossed plastic	

ratings

Product Code	T.C.R.	Resistance Range (Ω) (E24) and Resistance Tolerance					Relative Resist. Tol.	TCR Tracking
		B: $\pm 0.1\%$	C: $\pm 0.25\%$	D: $\pm 0.5\%$	F: $\pm 1\%$	G: $\pm 2\%$, J: $\pm 5\%$		
RTY	T: ± 10	1k Ω ~ 40k Ω	1k Ω ~ 40k Ω	1k Ω ~ 40k Ω	1k Ω ~ 40k Ω	1k Ω ~ 40k Ω	0.05%, 0.1%, 0.25%, 0.5%, 1%, 2%	5, 10, 25, 50
	E: ± 25	1k Ω ~ 150k Ω	1k Ω ~ 150k Ω	100 Ω ~ 150k Ω	100 Ω ~ 150k Ω	100 Ω ~ 150k Ω		
	C: ± 50			51 Ω ~ 200k Ω	51 Ω ~ 200k Ω	51 Ω ~ 200k Ω		
	H: ± 100			30 Ω ~ 200k Ω	30 Ω ~ 200k Ω	30 Ω ~ 200k Ω		

Please ask about your custom devices and circuits. (Different resistance combination available) Depending on the circuit and package, much higher resistances are possible. For RIA20, 24 pin, highest resistance value/element is up to 100k Ω .

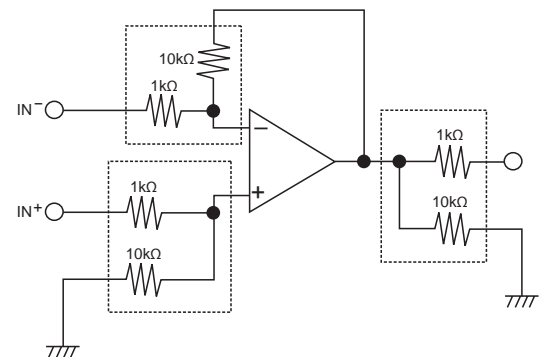
circuit schematic



ratings

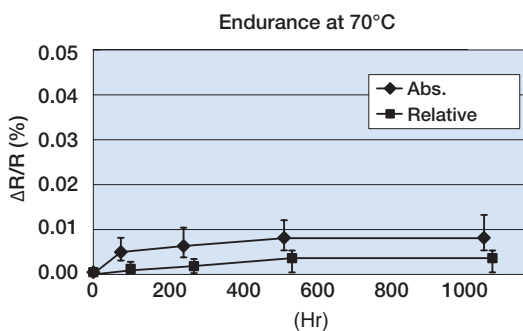
Package Symbol	Package	Number of Pins	Package Power Rating (W)
S03	SOT-23	3	0.2

example of application



typical characteristics

Endurance at 70°C (Typical: 1k Ω , 8 resistors/package)



Specifications given herein may be changed at any time without prior notice. Please confirm technical specifications before you order and/or use.

11/15/17